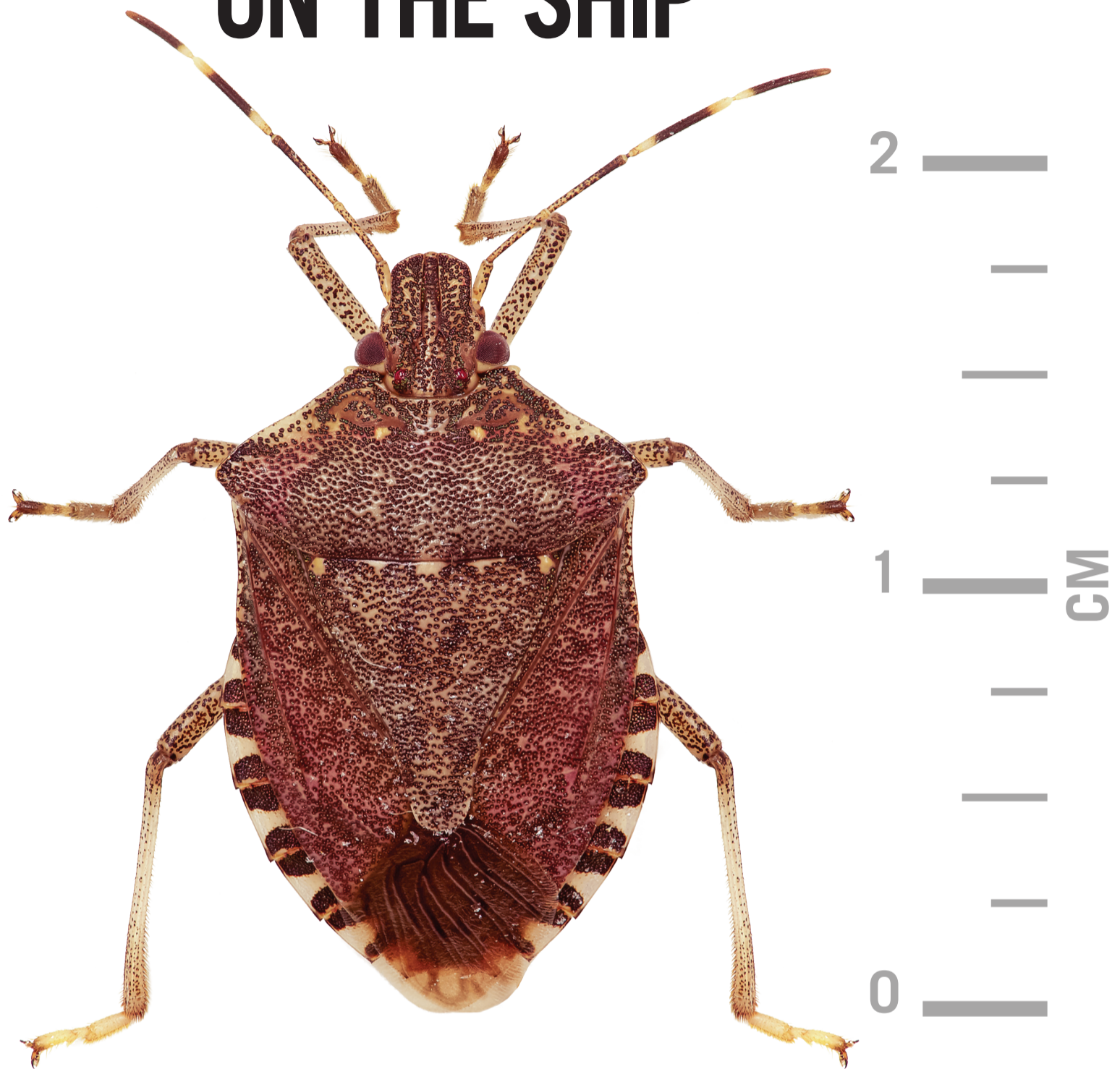


IF YOU FIND ONE OF THESE ON THE SHIP



CATCH IT. KILL IT. REPORT IT.

If you find one of these in or on cargo cover it.

Crew – please report the find to the master

Master – please report the find to the quarantine authorities at the destination.

Exotic pests like the brown marmorated stink bug are a threat to the economy and environment for many countries.

BROWN MARMORATED STINK BUG

Legal status: Unwanted organism

This insect is NOT present in New Zealand but we would like to know if you have seen it here.

WHAT IS IT?

Brown Marmorated Stink Bug (*Halyomorpha halys*) is an agricultural pest found in Asia, notably China, Japan, and Korea; it has aggressively invaded the US and could successfully establish in New Zealand.

This insect feeds on more than 300 hosts, primarily fruit trees and woody ornamentals but also field crops. A broad range of crops can be attacked including: citrus; pipfruit; stonefruit; berries, grapes, asparagus, soybeans, sweetcorn, honeysuckle, maple, butterfly bush, cypress, hibiscus and roses.

Adults generally feed on mature and immature fruit, while nymphs feed on leaves and stems as well as fruit. It severely disfigures fruit and renders it unmarketable, which results in control costs and production losses. Brown marmorated stink bug (BMSB) damage to woody ornamentals and forest trees has been reported as cosmetic only.

BMSB is not a risk to human health but is a public nuisance. When disturbed or crushed it emits a characteristic, unpleasant and long-lasting odour.

WHAT DOES IT LOOK LIKE?

Adults are approximately 1.7 cm long, with a distinctive brown “shield” shape. Underside is white/tan, legs and antennae are brown with white banding.

Eggs are light green, barrel shaped, and found in clusters of 20–30 eggs. These eggs are laid on the underside of leaves.

Young nymph stages are yellowish brown, mottled with black and red. Older nymph stages are darker, with the banding pattern on the legs and antennae beginning to appear.

HOW COULD IT GET HERE?

The adults naturally tend towards cracks/crevices to shelter from the environment in the winter months and may find their way into loaded containers for import into New Zealand. The insect has also spread through the transport of personal effects and housewares. It may also find its way into luggage and mail.

MPI has a number of measures in place to reduce the risk of exotic pests being introduced including requirements for importers and screening at the border. However there is no such thing as zero risk and it is possible the insect could hitch-hike its way into the country undetected.

WHAT CAN I DO?

Horticulturalists and home gardeners: Report any suspect finds to MPI on 0800 80 99 66. If possible photograph and/or collect samples. Catch it and call us.

Travellers and those receiving mail from overseas: Please make sure you open luggage and mail from overseas in an enclosed space to contain any hitch-hiking pests. Report anything you find to MPI on 0800 80 99 66. If possible photograph and/or collect samples. Catch it and call us.



Adult insect.



Underside of adult insect.



Eggs with emerging nymph stage insects.

Photo: Ministry for Primary Industries

Photo: Pennsylvania Department of Conservation and National Resources

Photo: David R. Lance, USDA APHIS PPQ

0800 80 99 66

www.mpi.govt.nz

October 2014



Brown shield bug (*Dictyotus caenosus*).
Approx 10mm long
Present in New Zealand



Pittosporum shield bug (*Monteithiella humeralis*). Approx 9.6mm long
Present in New Zealand



Brown soldier bug (*Cermatulus nasalis*).
Approx 15mm long
Present in New Zealand



Brown form of Green Vegetable bug (*Nezara viridula*). Approx 17mm long
Present in New Zealand



Brown marmorated stink bug (*Halyomorpha halys*). Approx 17mm long
NOT Present in New Zealand



HOW CAN I IDENTIFY BMSB?

There are currently other species of stink bugs found in New Zealand that could be confused with the Brown Marmorated Stink Bug (BMSB).



Key distinguishing features of the adult BMSB are:

- » its size (14–17mm);
- » white banding on the antennae;
- » alternate black and white markings on the abdomen.

If you are unsure, catch it, call us.

0800 80 99 66